



2024

Sustainability  
Performance  
Summary Round Up



Steps to Net Zero





# Highlights

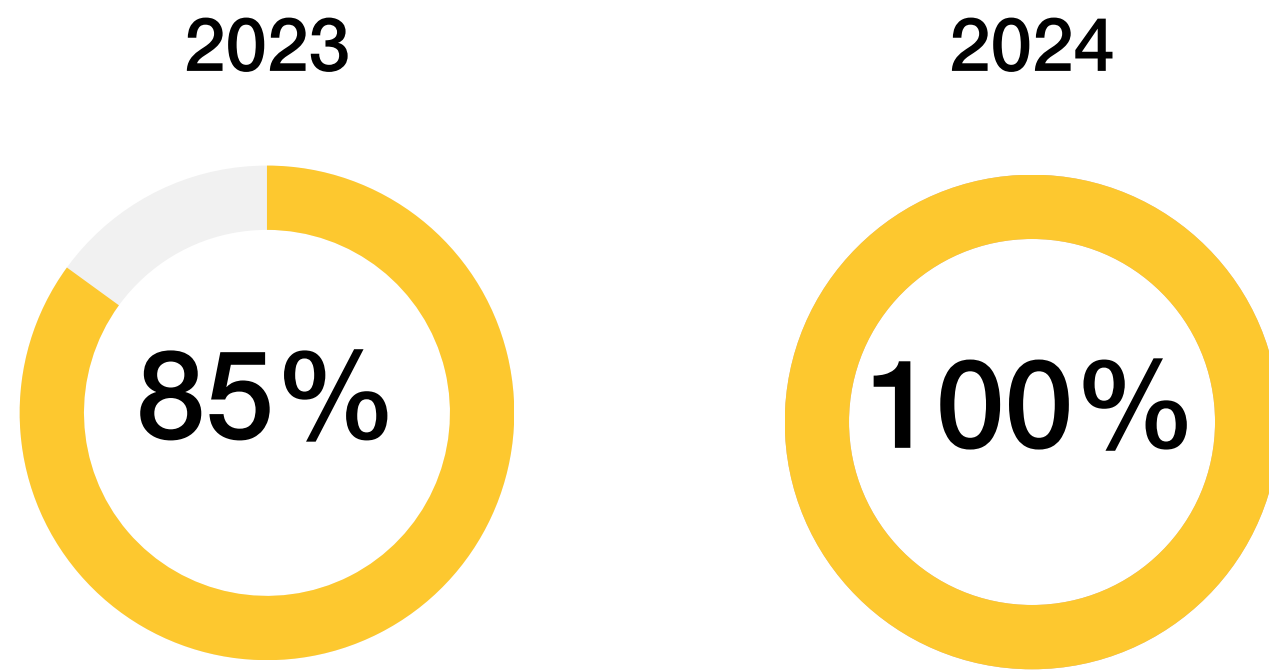
- 01 Introduction
- 02 Waste Management Key Stats
- 03 Carbon CO2 Savings
- 04 Target Triumphs
- 05 Carbon Footprint Data 2024
- 06 Material Recycling
- 07 Product Evolment
- 08 Supporting Graphs

Komfort Partitioning has a proud history over the last 50 years of trading and is looking forward to the years ahead. The company has recognised its responsibility towards the environment and has pledged to take action to commit to the 2015 Paris agreement to drive down emissions and limit global temperature rise to 1.5°C. Using the Greenhouse Gas Protocol standards (GHG), Komfort will track its targets using the Science-Based Target initiative (SBTi).

We have now completed the third year of recorded data. Each year we are gaining further knowledge and setting objectives that moves us closer to becoming a Net Zero company.

This report ensures transparency in seeing how the organisation is having an impact on the environment. It will show how much carbon we have produced and compare this against previous month's or year's figures.

# Waste Management Key Stats

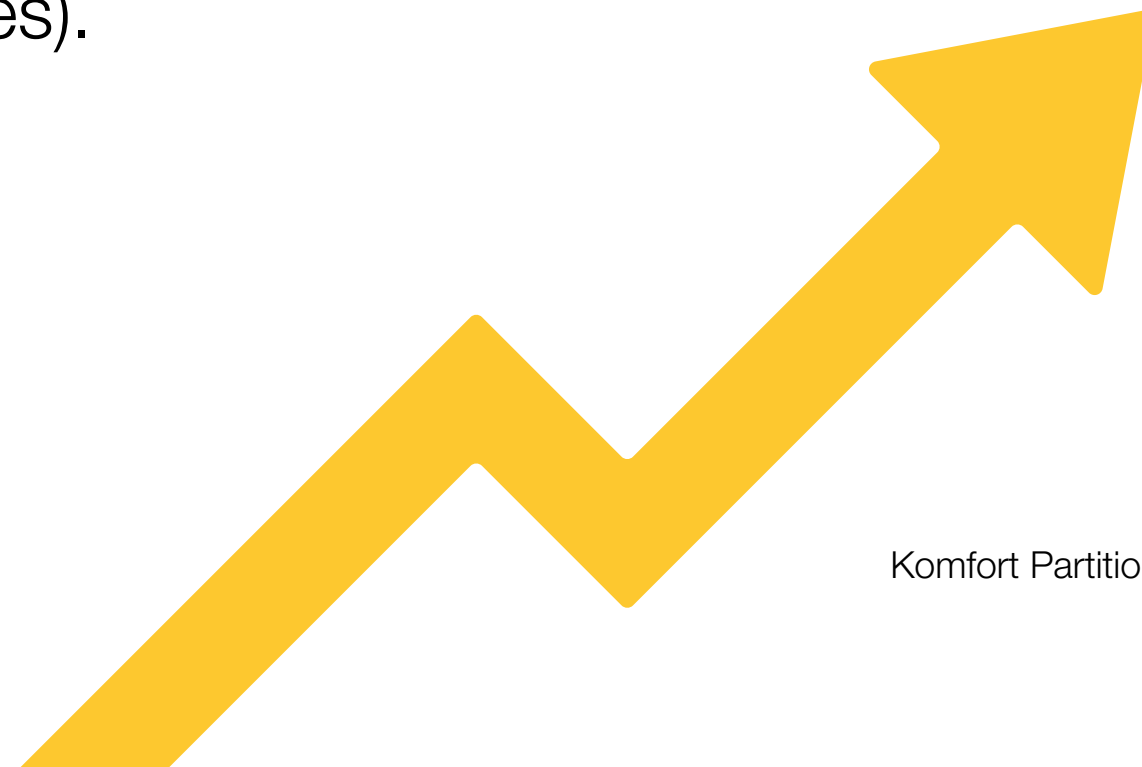


In 2024, we successfully diverted **100%** of our waste away from landfill, a 15% increase from 2023.

# Waste Management Key Stats

**+3.8 tonnes**

Increase in waste collected comparing from 2023  
(138.1 tonnes) to 2024 (141.9 tonnes).



# Waste Management Key Stats



63.95%

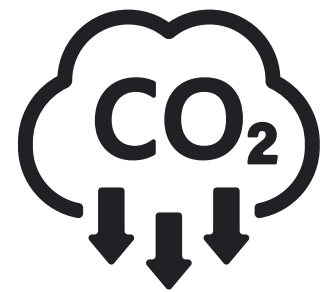
of waste was recycled in 2024, showing a 3.71% increase compared to 2023 (60.24%).

# Carbon C02 Saving Against Our Waste Management

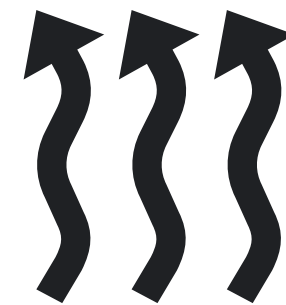
	2023	2024	Improvement
kilograms of C02 saved	19,000	39,000	<b>+20 kilograms of C02 saved</b>
trees planted (C02e)	65	136	<b>+ 75 tree planted</b>
cars off the road (C02e)	7	15	<b>+ 8 cars off the road</b>
houses powered (C02e)	24	24	<b>consistent as year prior</b>

# Target Triumphs

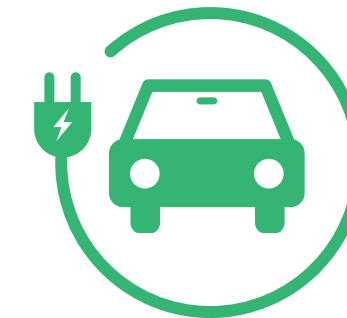
Reduced our total carbon emissions from 818 tonnes of Carbon in 2023 to 689 tonnes of carbon in 2024 (15.8% reduction).



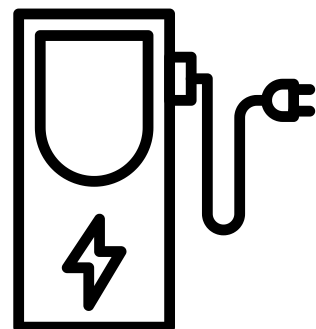
Replaced two boilers to more energy efficient models.



Signed up to Octopus EV, this gives employees the opportunity to switch to electric vehicles through salary sacrifice.



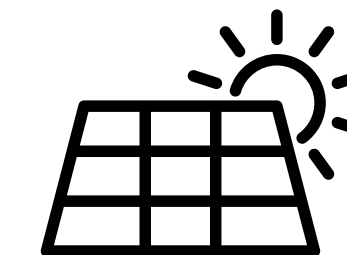
Electric charger points have been priced, these will be installed during 2025.



Replaced some of our older Fleet to more efficient models.



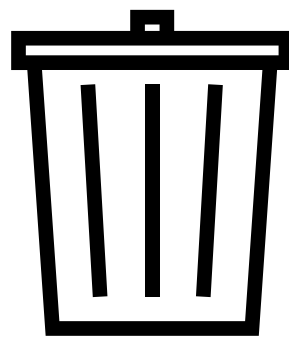
Quotes obtained for Solar panels to be installed onto the roof of AX10. This is currently in discussion with the Landlord prior to approval. This will make significant reductions in the use of our Electricity.





# Target Triumphs

External project site waste materials are returned to Ax10 site for recycling, reducing the amount of waste sent to landfill.



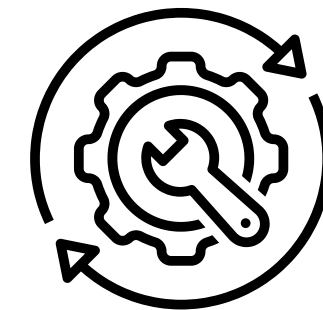
Employees are returning old and worn workwear for recycling.



Suppliers have improved our online portals to produce more accurate data when logging our waste figures. We also are made aware what happens to our waste and how much is diverted from landfill.

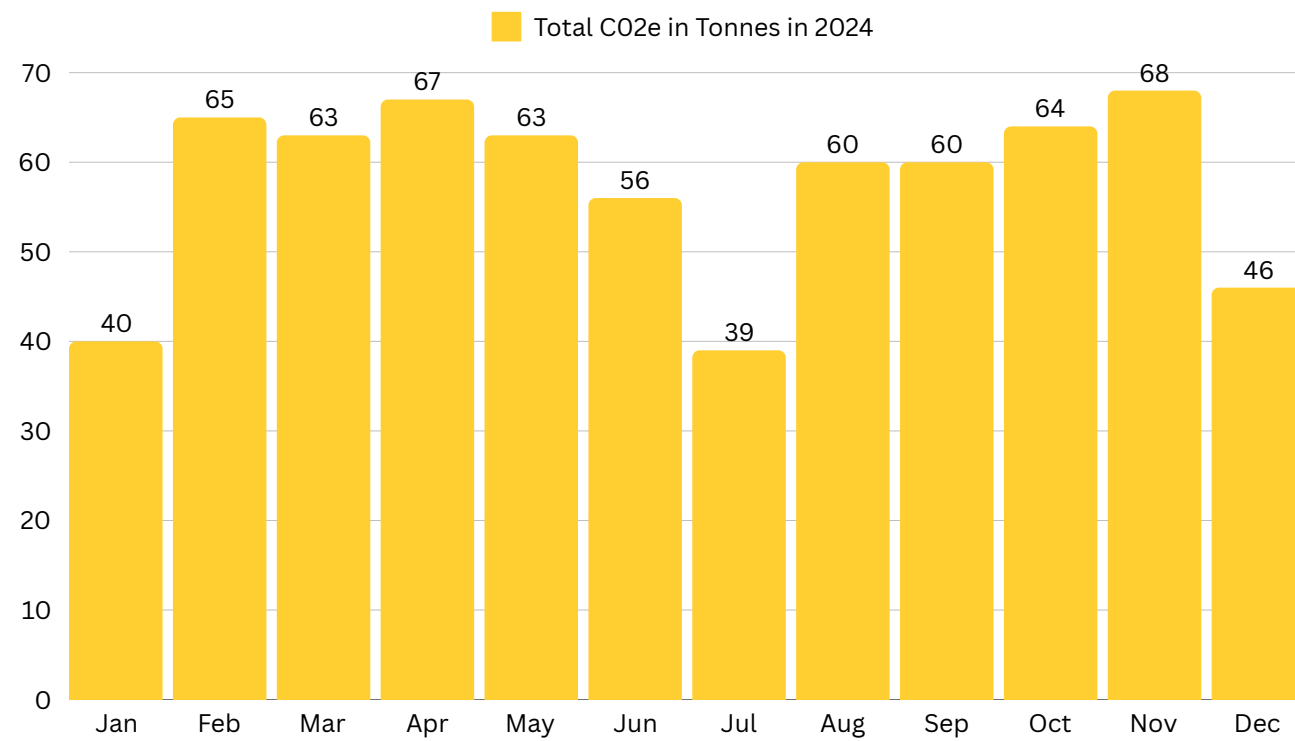


Increased internal maintenance on our sites has help us to reduce our energy waste. End of day site walks by nominated employees to ensure all energy sources are turned off.



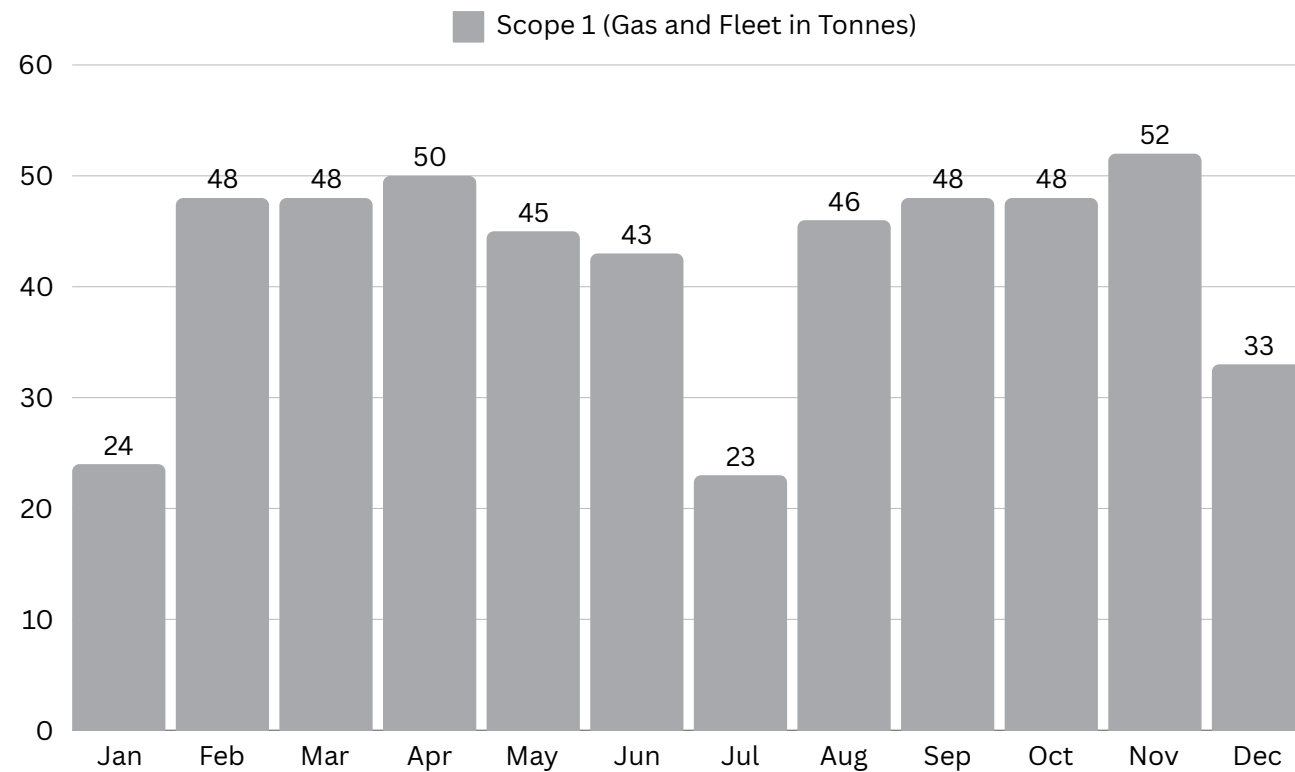
# Carbon Footprint Data 2024

Below are graphs of how much CO2 equivalent Komfort have produced for 2024. These are calculated using industry standards, as we and technology progress further, these figures will become more accurate.



# Carbon Footprint Data 2024

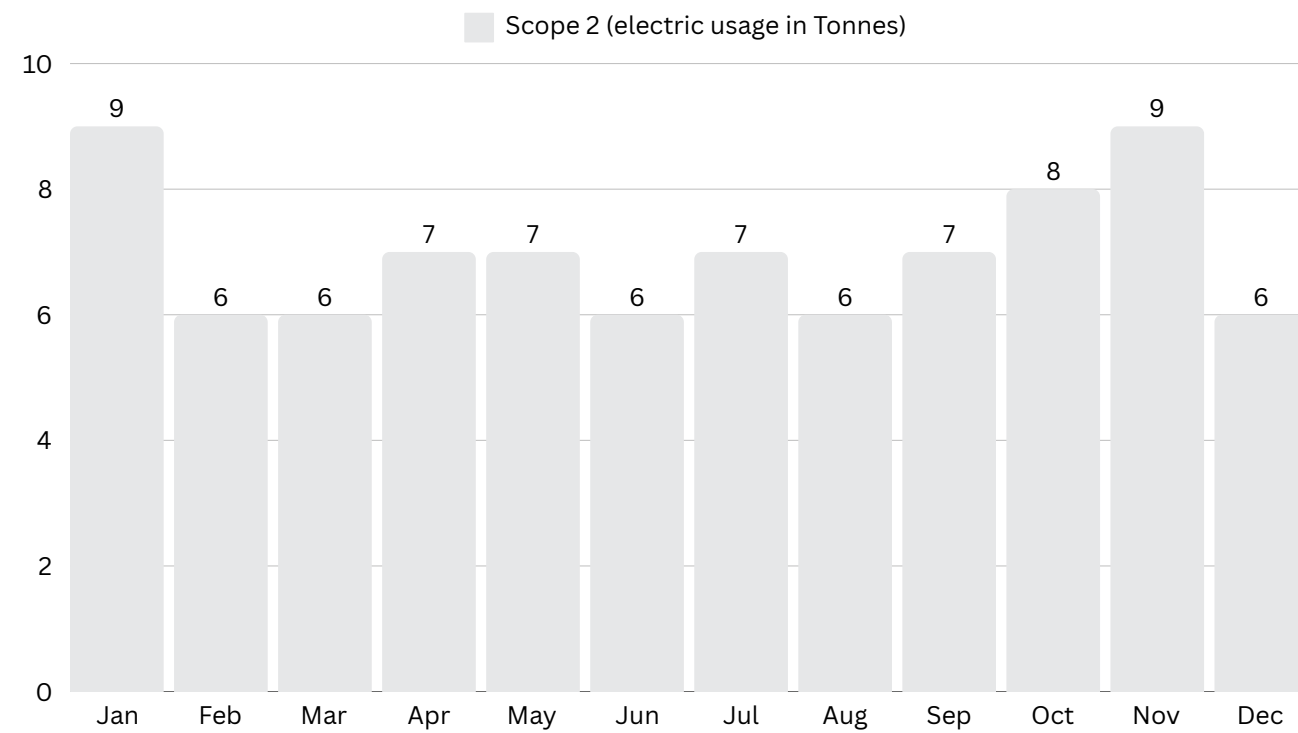
Scope 1 - Direct emissions - gas & fleet



These are the emissions from sources we own and control and are therefore are directly responsible for. For most businesses, this will be any gas heating or fuel oil you burn on-site, and the fuel you use in your company vehicles. If you use industrial refrigeration or air conditioning, refrigerant losses would also be included here, along with any emissions that may be released directly during a manufacturing process.

# Carbon Footprint Data 2024

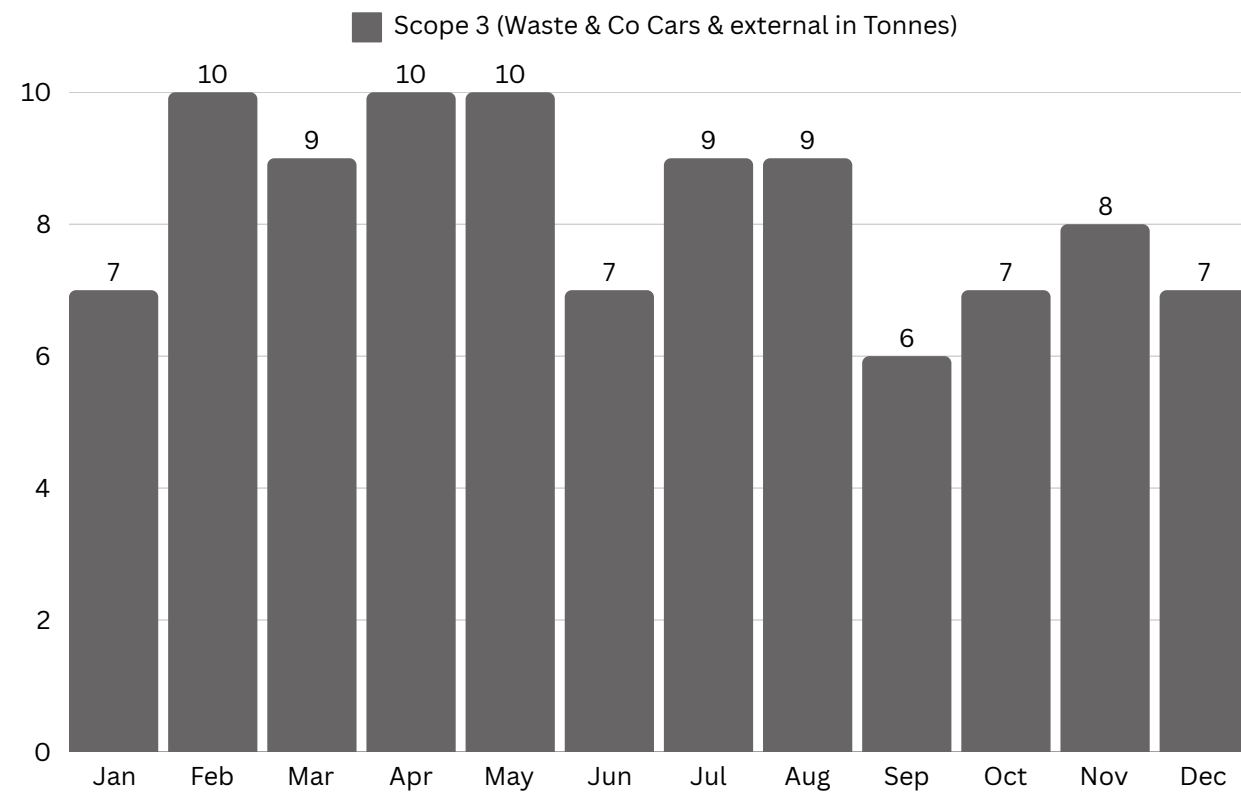
Scope 2 - Indirect emissions - electricity usage



These are the emissions we indirectly produce through the energy we purchase, which for most businesses is solely electricity. By using electricity, we are indirectly responsible for the greenhouse gases generated at source by the energy producer.

# Carbon Footprint Data 2024

Scope 2 - Indirect emissions - waste, company cars & external transport



These are any other emissions we’re indirectly responsible for from sources outside our direct control, e.g. the goods and services we purchase, the distribution and use of our own goods and services by customers, the disposal of our waste, employee commuting or business travel, and so on.

As we progress on our journey to reduce our carbon footprint we will engage with all staff at all levels of the organisation, every suggestion, and any help to help us realise these ambitious goals will be welcome.

# Material Recycling

0%

of our waste ends in landfills

100%

of our waste, including Aluminium, Steel, Glass, Plasterboard, Wood, Cardboard, paper and Dry mixed packaging, are recycled

Please contact our team if you interested in reading our dedicated Waste Management Plan for 2025.

Waste Description	Estimated Quantity
Cardboard/paper	1.7 tonnes - 100% recycled
Hazardous Waste	On demand, little anticipated this year
Non-Hazardous Waste	62 tonnes - 60% diverted from landfill
Timber	29 tonnes - 100% recycled
Recyclate	7 tonnes - 100% recycled
Steel	30 tonnes - 100% recycled
Plasterboard	12 tonnes - 100% recycled
Concrete/Building Rubble	None
Electrical Waste	Target twice per year
Glass	37 tonnes - 100% recycled
Aluminium	45 tonnes - 100% recycled

# Recycled Content

Recycled content in purchased aluminium and glass  
(95% of materials used for glass partitioning):

## Aluminium

80%

of the material in the aluminium we purchase through our preferred supplier is made of recycled content.\*

06

## Glass

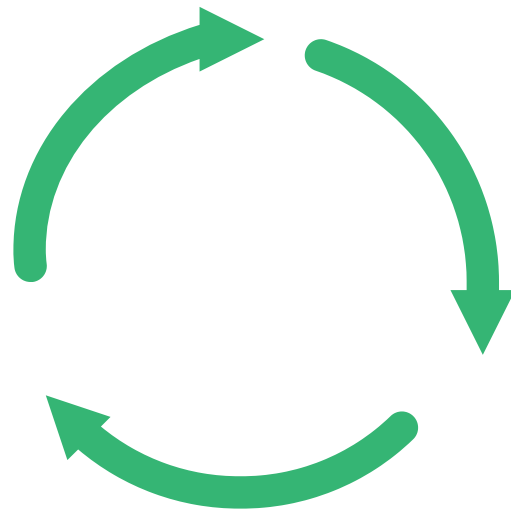
13-25%

recycled content

\*65%+ of our total aluminium is purchased through our preferred supplier.

# Recycled Content Environmental benefits

**Reduced carbon footprint:** Using recycled materials decreases energy consumption and greenhouse gas emissions.



**Preservation of natural resources:** Recycling materials conserves raw materials and reduces the need for extraction.

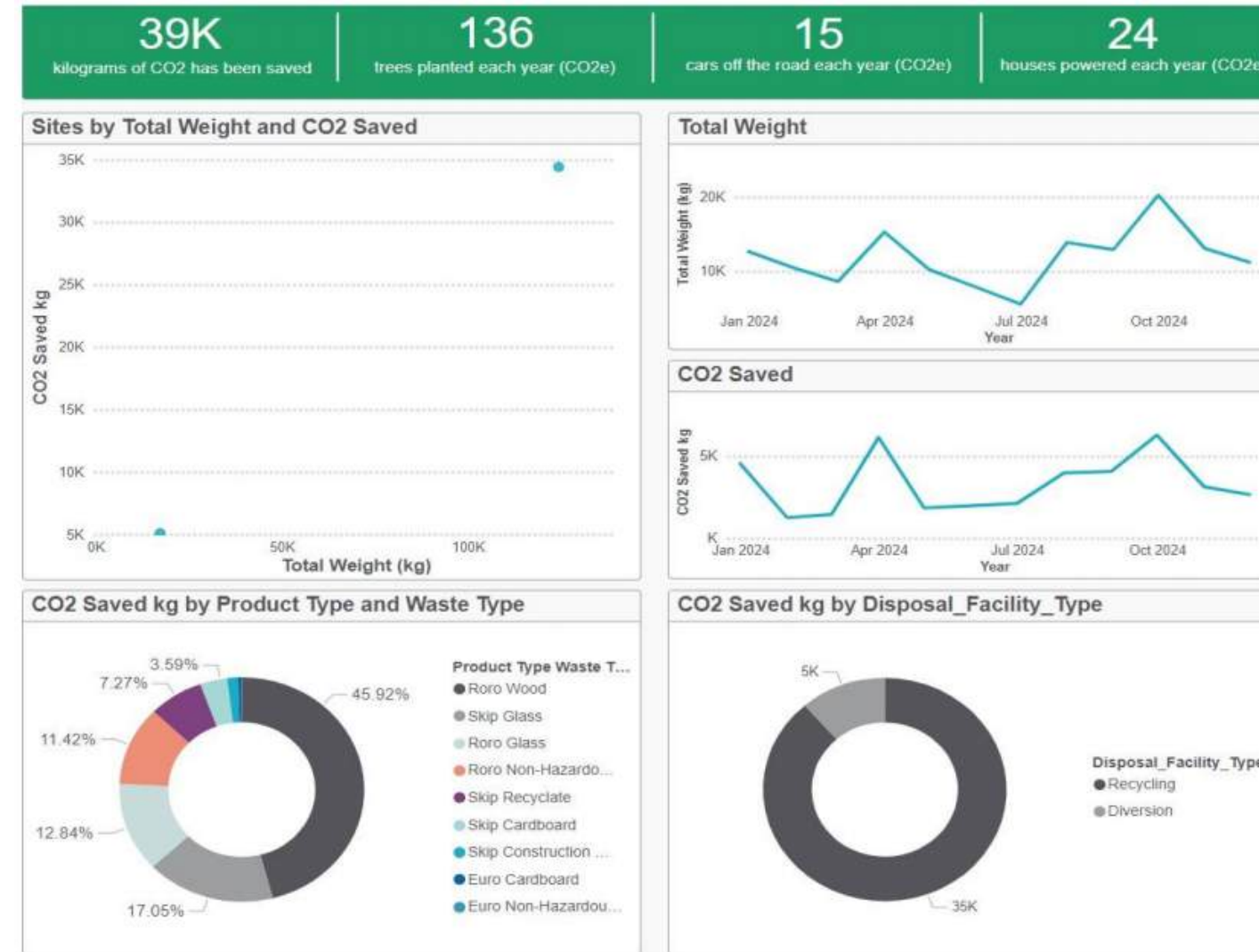
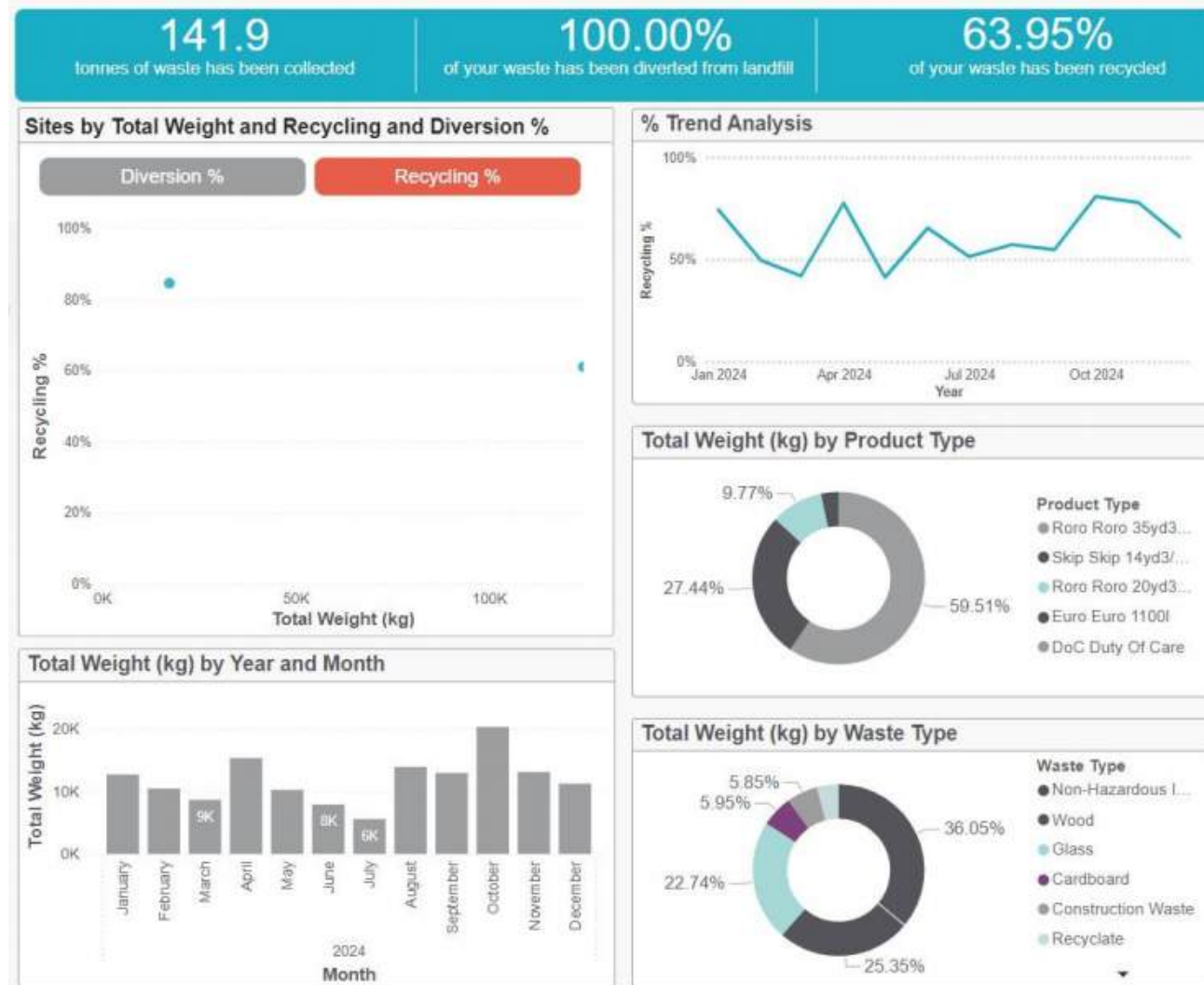




Komfort Partitioning are always look to evolve our product offering to create a more circular economy. We do this through a number of ways:

**Designing for disassembly:** Facilitating easy dismantling and recycling of partitioning systems to be reused and repurposed.

**End-of-life considerations:** Planning for the recyclability or reuse of materials at the end of their lifecycle.





# Next Steps

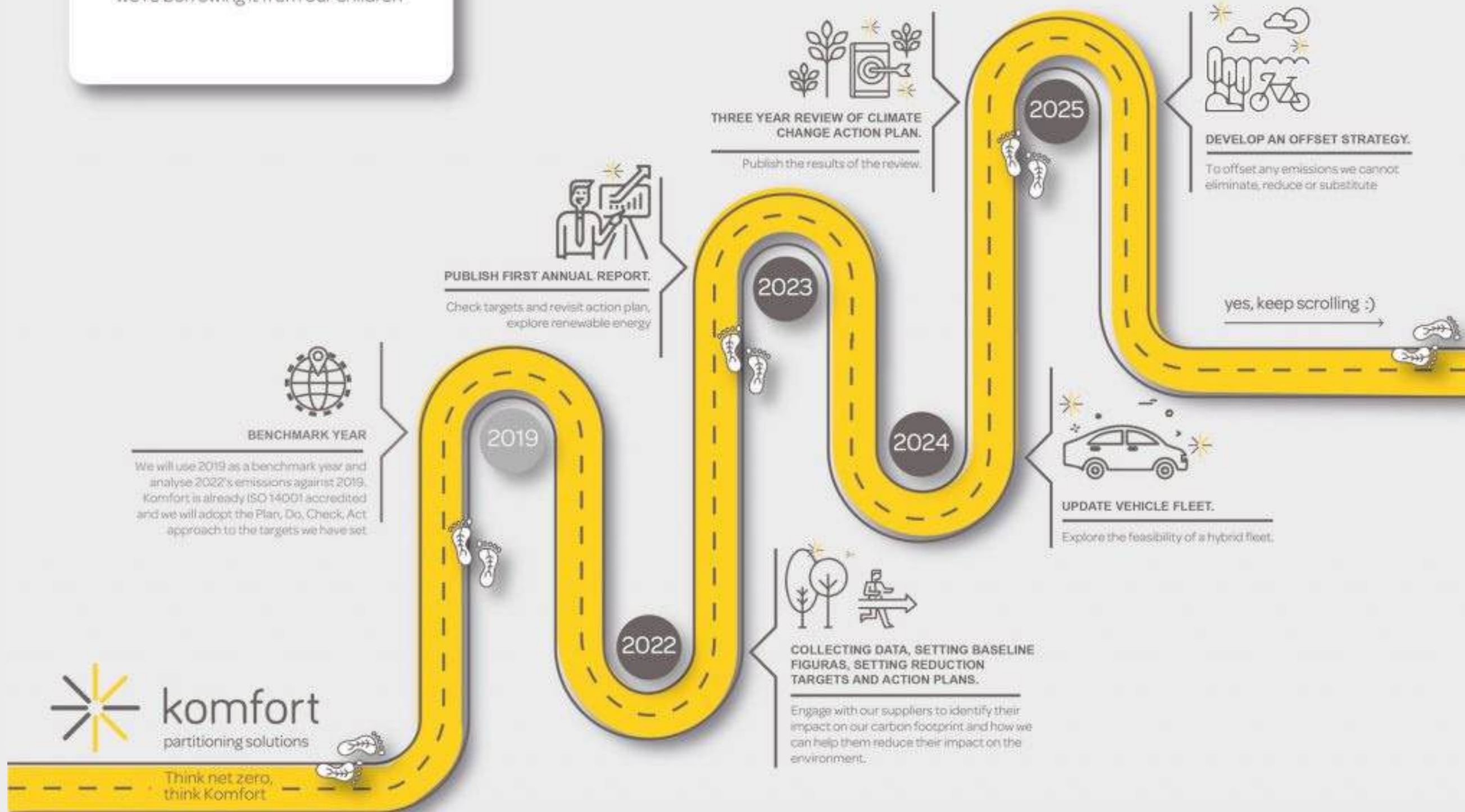
---

Continued support in reducing Co2 usage is critical to help the business meet its net zero targets. This includes reducing energy usage in offices, the factory and with our vehicles.

If anyone has any suggestions to help reduce our energy consumption and carbon footprint, then please get in touch with a member of the Conformance team, also our Directors, Jim Smith or Steve Eyles, we will welcome your ideas.



'We didn't inherit this world from our parents,  
we're borrowing it from our children'





# Ask us for the latest data

---

As part of our commitment to continued steps towards Net Zero, we monitor and track our carbon footprint through our Komfort Partitioning Science Based Target initiatives following the UK Government GHG Conversion Factors for Company Reporting.

Our reporting and actions will evolve as the climate change targets and rules change, both nationally and internationally.

Rob Reader  
Conformance Manager  
[Robert.Reader@komfort.co.uk](mailto:Robert.Reader@komfort.co.uk)



# 2024

# Sustainability Performance Summary Round Up



Thank you for reading.  
Keep an eye out for our quarterly updates.